

# EXPRESS UNDERBENCH BOIL UNITS

Our automatic under-bench boil unit is plumbed-in directly to your water supply, meaning your staff will never run out of boiling water.

## EBE2.5

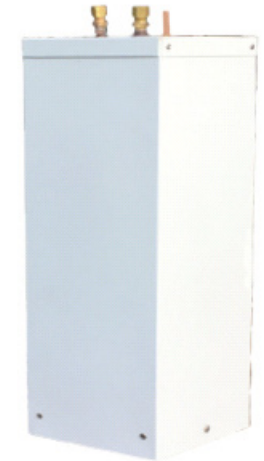
Suitable for	Small to medium sized offices or businesses catering for up to 20 people at any given time
Litres Capacity	2.5
Quantity of Cups*	20
Cups/Hour Recovery	120
Rating kW	2.4
Colour	White
Installation	Plumber to install Power point
Dimensions	Width: 248mm Height: 340mm Depth: 305mm

## EBE5.0

Suitable for	Larger offices, shops or businesses catering for up to 40 people at any given time
Litres Capacity	5.0
Quantity of Cups*	40
Cups/Hour Recovery	120
Rating kW	2.4
Colour	White
Installation	Plumber to install Power point
Dimensions	Width: 248mm Height: 480mm Depth: 305mm

## KEY FEATURES

- Stylish discreet design, ideal for restricted spaces
- Plumbed-in directly to the main water supply
- Sleek counter-mounted, stainless steel tap, adjacent to the sink
- DrinkSafe® International Service and Sanitisation Programme included
- Note: unit will vent water out of the boiling water faucet for a short period of time after use of clear pipes for heating efficiency



*NOTE:  
Unit will vent water out of the boiling water faucet for a short period of time after use to clear pipes for heating efficiency.*

*\*Quantity of cups is based upon pouring 200ml cups without interruption  
Please note: Filtration is not a standard offering with this unit.*

### PRODUCT CODE: EBE SERIES

EB2.5/EB5.0

Just Water New Zealand  
Private Bag 92-811, Penrose  
Auckland, 1642

p. 0800 801 802  
f. 09 630 9300  
e. customersales@justlife.co.nz@

# Just Water.